

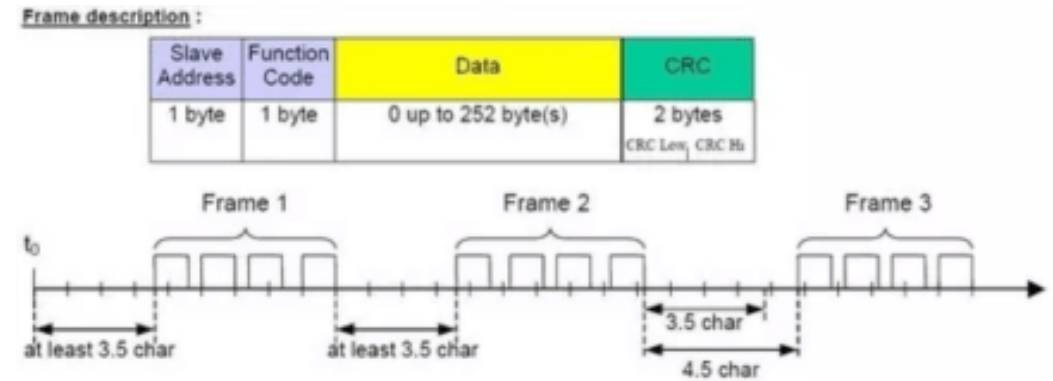
Protocol Modbus RTU or TCP/IP



STRUXI

Modbus RTU:

- Uses serial communication;
- Network devices can be daisy-chained on the network;
- Can use repeater on network;
- Maximum length 1200 meters;
- 32 slaves on the network without using a repeater and 247 with a repeater.



Modbus TCP/IP:

- Ethernet network;
- Can use existing Ethernet frame;
- Faster and easier to diagnose;
- Cost reduction with structure.

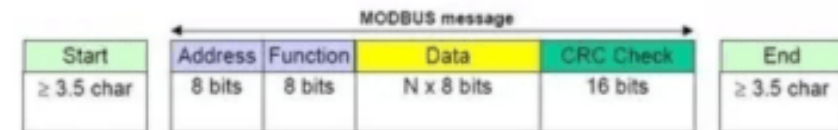
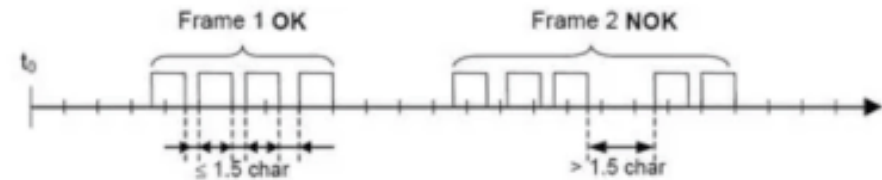
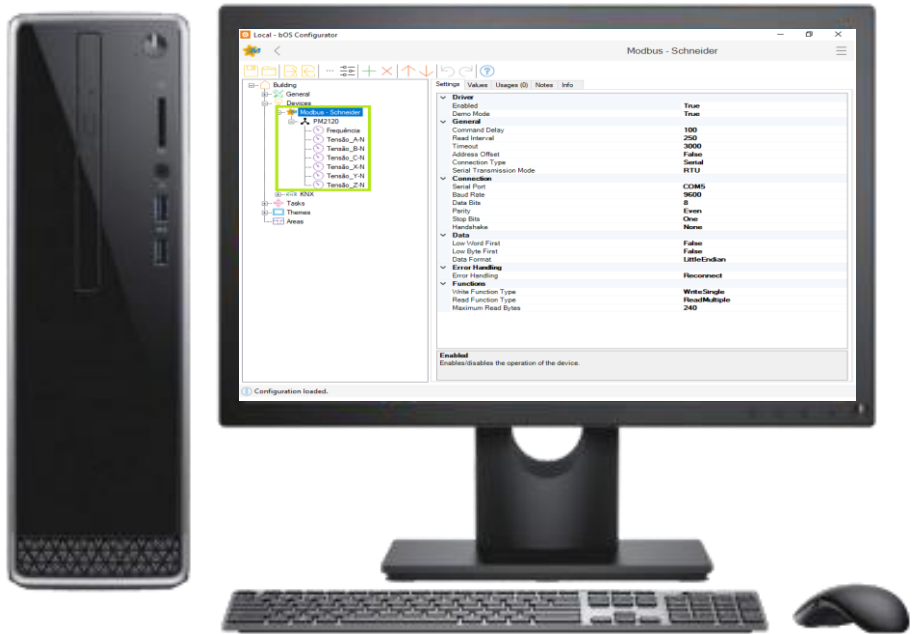


Figure 13: RTU Message Frame





OR



Settings	Values	Usages (0)	Notes	Info
Driver	Enabled		True	
	Demo Mode		True	
General	Command Delay		100	
	Read Interval		250	
	Timeout		3000	
	Address Offset		False	
	Connection Type		Serial	
	Serial Transmission Mode		RTU	
Connection	Serial Port		COM5	
	Baud Rate		9600	
	Data Bits		8	
	Parity		Even	
	Stop Bits		One	
	Handshake		None	
Data	Low Word First		False	
	Low Byte First		False	
	Odd Parity		False	
Error Handling	Error Handling		Reconnect	
Functions	Write Function Type		WriteSingle	
	Read Function Type		ReadMultiple	
	Maximum Read Bytes		240	

How many?