

bOS Upgrade Instructions

[WARNING](#)

[Installation](#)

[BETA](#)

[Issues](#)

[bOS Config Missing Plugins](#)

[New bOS Config can't connect to old servers](#)

[Jigsaw](#)

[Downgrade](#)

[Linux \(Jigsaw\) Server](#)

[Windows Server](#)

[Downgrade BETA](#)

[Issues](#)

[Https access is not working after downgrade](#)

[Old Versions](#)

[4.4.4](#)

[3.0.76](#)

WARNING

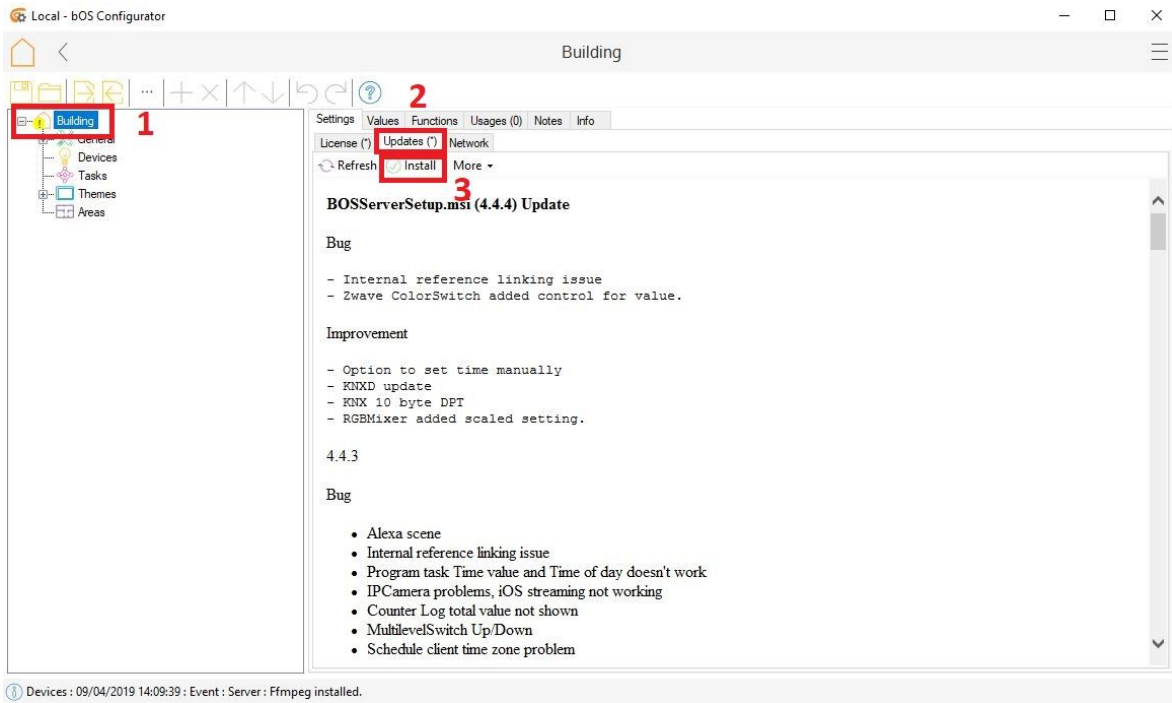
Before updating to latest version of bOS make a backup of your current configuration!

Downgrade on Jigsaw servers is not possible without ComfortClick support!

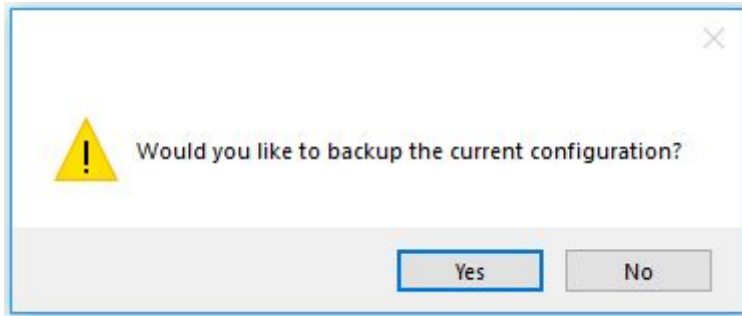
Downgrade will not be possible without a backup of your configuration!

Installation

1. Open your bOS Configurator and login to your controller.
2. Select your Building node (1) and select Updates (2) tab.
3. If updates are available the release notes will be displayed.
4. **Read the release notes carefully!**
5. Click install button (3) to proceed with installation.

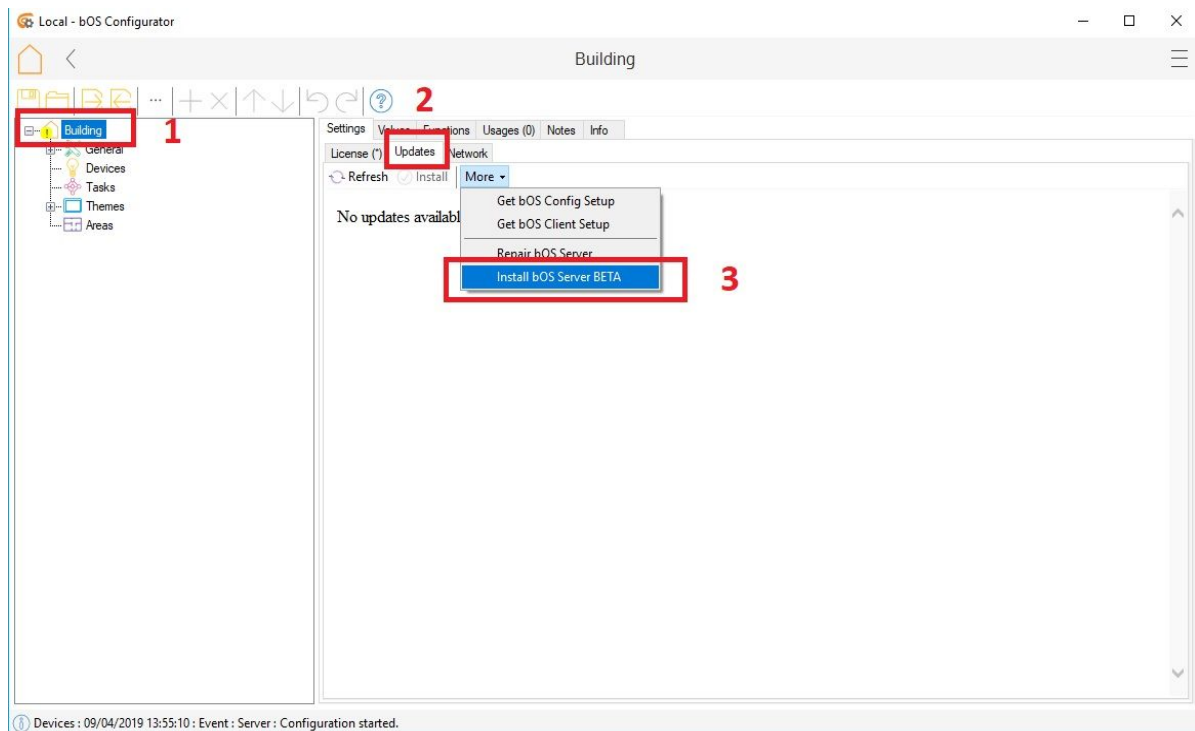


6. Make a backup of current configuration when backup message is displayed.



BETA

To install BETA version, Click on More and select Install bOS Server (3).



Issues

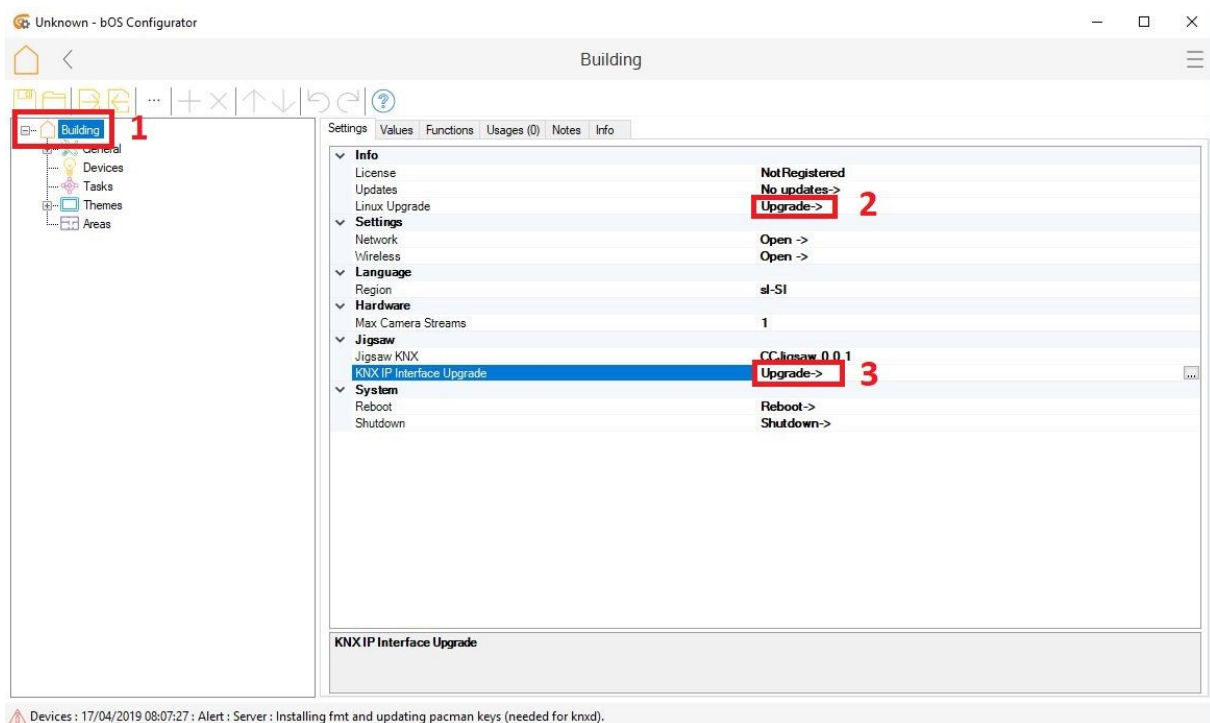
New bOS Config can't connect to old servers

New bOS Config will prevent connection to old server and offer to upgrade the server. If you don't want to upgrade the server yet, you can use the old bOS Config (<https://cccloudstorage.blob.core.windows.net/bos4/bOSConfig.zip>). Unpack the zip file and run BOSConfig.exe file.

Jigsaw

Jigsaw Server can be upgraded in bOS Configurator.

1. Open your bOS Configurator and login to your controller.
2. Select your Building node (1).
3. To upgrade Linux OS: click on Linux Upgrade (2). **Linux upgrades can a long time. During upgrades the server may become unresponsive. Make sure the process is not interrupted. Do not unplug the server and do not make any changes in bOS Config during the upgrade process. After successful update the controller will reboot automatically.**
4. To upgrade KNX IP Interface: click on KNX IP Interface Upgrade (3).



Downgrade

Linux (Jigsaw) Server

Downgrade on Jigsaw servers is not possible without ComfortClick support!

Windows Server

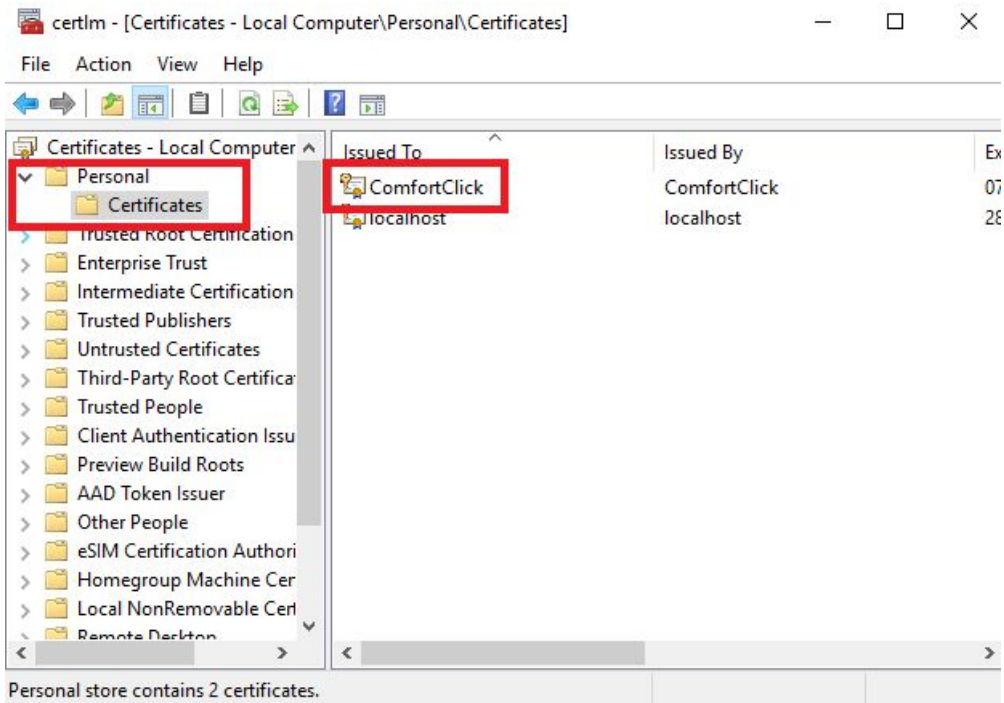
Downgrade BETA

1. Uninstall bOS Server, bOS Client, bOS Config.
2. Delete (or Move) C:\Program Files (x86)\ComfortClick\bOS Server\Building folder.
3. Download the current official bOS release from our website:
<https://www.comfortclick.com/Software/>.
4. Install bOS Server and bOS Config.
5. Upload backup configuration.

Issues

Https access is not working after downgrade

Open Windows command prompt and type: certlm.msc. Select Personal, Certificates, remove ComfortClick certificate.



Old Versions

4.4.4

Server: <https://cccloudstorage.blob.core.windows.net/bos4/BOSServerSetup.msi>

Config: <https://cccloudstorage.blob.core.windows.net/bos4/BOSConfigSetup.msi>

Client: <https://cccloudstorage.blob.core.windows.net/bos4/BOSClientSetup.msi>

Config ZIP: <https://cccloudstorage.blob.core.windows.net/bos4/bOSConfig.zip>

3.0.76

Server: <https://cccloudstorage.blob.core.windows.net/bos3/BOSServerSetup.msi>

Config: <https://cccloudstorage.blob.core.windows.net/bos3/BOSConfigSetup.msi>

Client: <https://cccloudstorage.blob.core.windows.net/bos3/BOSClientSetup.msi>